

HorseWorld

News

THE EQUINE RESCUE CHARITY

Registered Charity No. 1121920

Spring / Summer
2015

**HELP save more foals
like Felix** **URGENT APPEAL**
See page 5

Upcoming Events
See Page 2

**How you've
helped**
See page 7



**Three-day-old foal
given new mum**
See page 2



Don't forget to keep up to date by becoming
a fan of 'HorseWorld Trust' on Facebook, or
following us on Twitter @HorseWorldTrust

Rescue, Rehabilitation & Rehoming of horses, ponies and donkeys

www.horseworld.org.uk


HorseWorld
RESCUE • REHABILITATE • REHOMES

Welcome

to the Spring/Summer edition of *HorseWorld* News

Firstly, thank you to everyone who responded to the 'Help save Felix' appeal. You can read about how your generosity has helped improve his life on page 4.



Sarah and Stevie

However, Felix's case was just the beginning of the 2015 rescue season, and so we are asking if you would be kind enough to contribute to the Felix Rescue Appeal to help save more foals like him.

Our most recent rescue of 'Muddy' was a distressingly similar case, and as we go to print our Welfare Team is responding to the needs of an unattended, tethered mare that has just given birth. Initially, this looks like another shocking case of neglect and abandonment.

There is a donation form on the back cover of this newsletter, and 'ways you can help' detailed on page 6. **Your support makes all the difference.**

And, if you can make a regular donation, this is particularly helpful when planning our long-term projects, like the rehabilitation barn (see page 5).

In this edition you can also read about the progress of some of the horses and ponies from previous rescues you have made possible; like Buddy, Einstein and Stevie.

I look forward to meeting you at one of our Open Days.

Thank you.

A handwritten signature in black ink, appearing to read 'Sarah Hollister'.

Sarah Hollister

Training and Re-homing Manager

P.S. Remember that you can make your gift worth 25% more to us with Gift Aid (see back cover).

Latest Rescue News

HorseWorld was called to a rescue after a passer-by had spotted the young foal in a ditch unable to climb out. It was estimated that the foal had been in the ditch for around 12 hours and was cold, wet and muddy. Despite numerous attempts to reunite the foal with his mother, she completely rejected him.



At the site of the rescue

The foal was named 'Muddy Waters' by HorseWorld staff, brought back to Keynes Farm and fed every hour through the night. Staff had anticipated doing this for many months to come until a surrogate mother was found....

Story continues on page 5

Upcoming Events

Saturday 18th July

Open Day focussing on Rehabilitation

Saturday 19th September

Open Day focussing on Re-homing

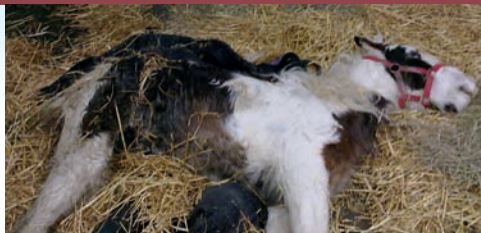
Sunday 6th December

Festive Celebration for the Horses, a Christmas themed Open Day

The Open Days above are **FREE** entry, donations gratefully received. There are also a number of natural horsemanship clinics running at HorseWorld this year. For more information about events, please keep an eye on our website:

www.horseworld.org.uk/events

Buddy finds a home!



Most of you will know Buddy who arrived in January 2011 weighing just a third of his ideal body weight. Now, four years later, he is fully recovered, fully grown and has finally found a family and a home to call his own. Buddy was so weak when he was rescued that his head had to be supported by grooms. It took a drip and six blood transfusions to give Buddy the strength to support his own weight.



Buddy on arrival

He had to be lifted to his feet every two hours day and night for the first two weeks as he couldn't be left lying down for too long. In his efforts to get up, he would rub sores on his shoulders, hips and head where his bones protruded through his fragile skin.

Now, four years on, Buddy is fighting fit and giving no clues to his traumatic start in life. HorseWorld's team of specialist trainers worked with Buddy to train him to be ridden so he could find a new home on the Charity's loan scheme where he would receive all the love and one-to-one attention he deserves. Buddy's new loaner, Harriet Champion said, "I'm so excited to give Buddy a new home.

He will be ridden by my two nephews and niece where they can all grow up and learn together as a team. I'm looking forward to being able to give all the team at HorseWorld updates on how he's doing after the bad start in life he had."



Buddy fully recovered

Buddy's medical care cost over £2,600 in the first three weeks alone. Vet fees and feed costs continued to accumulate throughout his rehabilitation. Manager, Jerry Watkins commented "The fact that Buddy kept fighting was enough inspiration for us to fight just as hard to save him. Now, seeing him start his new life as a riding pony with a family that love him makes it all worthwhile." Buddy is now fully recovered but is just one of many rescue cases that HorseWorld helps. The winter is our busiest time when the cold weather and lack of grazing means that horses that are abandoned or neglected become emaciated and ill very quickly.

We do not receive any government funding for the rescue service we provide, and rely completely on the generous support of the public to be able to rescue these animals. We would like to thank everyone who donated to Buddy's Hope Appeal. It is down to you that we were able to save his life."



Buddy and Beaufort

To make a donation to Buddy's Hope Appeal and help others like him, please visit:

www.justgiving.com/buddyshopeappeal

or call **01275 893020**

Felix

On 16th January 2015, HorseWorld were called to check a number of horses and ponies being fly-grazed near Bristol. On arrival, a small abandoned colt foal was found emaciated almost to the point of death. In the deep drainage ditch that ran alongside the thin strip of wasteland, his young companion lay dead in the freezing water.

"When we saw this poor creature standing barely alive, we immediately called for assistance from the police and RSPCA to get authorisation to remove him from the scene." Said HorseWorld's Equine Rescue Manager, Jerry Watkins.

"We also called a member of our team to bring a horse trailer to take him back to our specialist facilities and had the grooms and vet standing by to receive him. These foals were clearly dumped and left to die. There was nothing around to eat at all except for a few tufts of poor grass on the ditch's steep edge."

The poor deceased foal would most likely have been trying to reach this vegetation, slipped in, and would have been too weak to climb out in his emaciated state. The rescued foal, now named Felix meaning 'Lucky one', has made a full recovery.



Felix at the site of rescue, January 2015



Felix unable to get up

"We had to lift him every so often through the night he wasn't strong enough to get up by himself." Said HorseWorld's Husbandry Manager, Joanne Vaughan.

"He had used up any fat reserves so his body had been breaking down muscle to survive. He would certainly have died that night if we hadn't rescued him. There was a hard frost that night and he would have laid down or eventually collapsed on the cold frosty ground and nobody would have been there to lift him up again.

Unfortunately he wasn't microchipped so no owner could be located and hence prosecuted. This is an ongoing problem for the rescue charities that are trying to bring about an improvement in equine welfare by, amongst other things, holding owners accountable for their actions."

Felix was given a big straw bed and fed little and often throughout the day and night so as not to overload his delicate stomach. He was given a wormer when he arrived and the size of the worms he excreted was shocking. If his mother wasn't wormed, Felix would have been infested with worms before he was even born. Thankfully he was able to digest the special food we gave him."

Whilst Felix's appeal passed its initial target thanks to the generosity of you - our supporters, the public and a large donation from Animal Friends Insurance Company, Felix was just the first of many horses that HorseWorld will rescue this year.

Most horses brought in will be the subject of legal action through bodies such as the local authorities, trading standards, RSPCA or Police. In such cases where we attempt to bring the owner to account for their actions, we cannot tell you about them for fear of jeopardising the court case. We can tell you that

the care of Felix and those like him will run into many thousands of pounds. HorseWorld are appealing for your help with our ongoing work.



Felix recovered, April 2015

You can make a donation to Felix's Rescue Appeal by; Texting **FELX55** or to the Rehabilitation Barn Appeal by texting **RESQ52** and the amount you would like to donate e.g. **£3, £5, £10** etc to **70070**

By calling **01275 893020** or by sending a cheque made payable to HorseWorld Trust to; HorseWorld, Delmar Hall, Staunton Lane, Whitchurch, Bristol BS14 0QL

Latest Rescue News... continued from page 2

"Whilst Muddy took to a bottle rather well, the ideal scenario was to pair him up with a surrogate mother." Said Jerry.

"After some phoning around, a suitable mare was found whose foal was stolen at less than 24 hours old only two days before. After the traumatic loss of her foal, she was only too willing to accept her new baby and has now become the foal's new mother. Muddy will stay with his surrogate mother until it is time for him to be weaned (around 6 months old) and will then come back to HorseWorld. Eventually, when he is old enough, he will begin training in order for him to hopefully find a "loving new home."

Three-day-old foal "Muddy" rescued from a ditch and given a new mum



Rehabilitation Barn Update

In the last newsletter, we wrote about the large rehabilitation barn and turnout area at Keynes Farm. It is an open area where the horses can socialise with each other and live as a herd; nervous animals don't have to be confined to a stable; and it allows youngsters and psychologically damaged horses to learn appropriate herd behaviour.

The barn and surrounding fencing was in desperate need of repair and a large area outside the barn needs to be re-concreted. A large hard-standing area would allow us to bring the horses in off of the mud when the winter is at its worst but allow them to still roam free together. This would help prevent the horses from developing conditions such as mud fever.

Thanks to your generous support the first phase of repair work on the barn (roof, guttering and cladding) has begun, and replacement fencing will be installed over the next few months. We hope that with your continued support for this project, which is a key area in our rehabilitation work that we will be able to undertake phase 2 of this project - the re-concreting of the hard-standing area, where the benefits to the rescued animals will endure for many years to come.



To donate to this project please see above;

Fundraising

How you can help...



A group from Lloyds bank who lent a hand

There are many ways you can help and get involved with HorseWorld Trust, and every penny you raise will go towards our neglected and mistreated horses. Here is a little guide to fire up your imagination and give you some ideas about how you can fundraise to help mistreated and neglected horses and ponies:

A bake sale or coffee morning is a great way to have a get-together with your family and friends whilst raising much needed funds for HorseWorld Trust. It could be an existing coffee morning you attend regularly or you could host your own, if you can put a collection tin out then you can make it your own event.



Hard at work on a corporate volunteer day

If you have a passion for HorseWorld Trust then why not tell the company you work for about it? Many companies like to support their employees' interests so why not ask if they might support your chosen charity.

Perhaps you prefer to be more hands on, in which case we can organise a corporate volunteer day where you and your colleagues can lend a hand on our working farm for the day and see the work we carry out on a daily basis.

Alternatively you could become a HorseWorld Trust Champion and make a regular donation of £5 or more a month. By being a regular donor you would enable us to cut down on our administrative costs, meaning more of your money would go directly towards helping neglected animals.

There are plenty more ways you can get involved with HorseWorld Trust:

Take on a challenge – abseil down a cliff, run a half marathon or dye your hair – if it's a challenge to you, and you could raise money doing it, then we can support you!

Community group – if you are part of a community group and want to fundraise for HorseWorld Trust please get in touch.

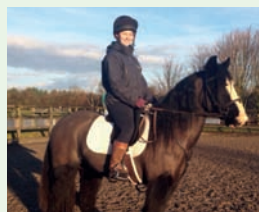
Remember us in your will – Three out of four of our animals are cared for using funds from bequests.

If you have your own idea and would like some help or would like any further information about fundraising for HorseWorld Trust please contact:

Emily Mitchard on 01275 893033 or emily.mitchard@horseworld.org.uk

How you've helped

On many occasions we have asked for your help and you have happily donated whatever you could, even when we haven't asked, you have still been there to help our horses! We are extremely grateful for this and want to show you where your donations have gone:



Einstein

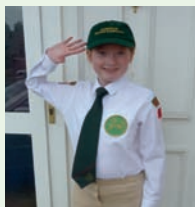
Einstein came to HorseWorld Trust in February 2012; he was rescued as part of a group of 12 horses that had been left in a dilapidated

barn filled with mud and faeces. The group were all suffering from illnesses such as Strangles and Salmonella; it is believed the owner had shut them out of sight and left them to die. Einstein was the healthiest out of the four horses we rescued, even though he had Strangles which led to an abscess bursting above his eye.

Understandably to start with Einstein was very wary of people and it took a long time to gain his trust. However, he is now able to be ridden and is available for rehoming. Your donations allow us to rescue horses like Einstein from desperate situations and bring them back to health so they can be given their "forever home".

Ways you have raised vital funds for HorseWorld Trust:

Hannah Mason is 14 years old and lives in Reading. After reading about Felix she decided she wanted to help. Hannah sold all of the items in her room that she no longer used and was able to raise a fantastic £115! We are extremely grateful for such a generous donation and gesture, thank you Hannah!



Hannah



Hannah is pictured (bottom left.) wearing her Windsor Horse Rangers Uniform. Collet Rousley (above) at

Hillview Stables, Crewkerne, chose HorseWorld Trust as their 2015 charity of the year. They have already planned lots of exciting events including a horse show in May and a treasure hunt in the summer. The first event they held was a Bingo night on 31st March this year it was a great success and raised around £1,000.

Snuggly Hoods, one of our corporate partners, have been a great supporter and donated many sweet itch rugs for our ponies and horses. This has saved us a great deal of money and means we can use these funds on our vital rescue work. Most recently they donated rugs for Lucy and Ben – don't they look smart!

We are extremely grateful to anyone who can give up their time to fundraise for the horses or our Discovery courses here at HorseWorld Trust. If you have planned a fundraising event or are interested in doing something please get in contact with

Emily on 01275 893033 or

emily.mitchard@horseworld.org.uk



Lucy and Ben wearing their Snuggly Hoods

Gallery



Ben



Bingo



Clifton (Police horse here on holiday)



Sunrise



Ernie

To see more pictures
visit our '[HorseWorld Trust](#)'
Facebook page and 'like us'

Stevie

In September 2013, HorseWorld Trust were called to North Bristol where Grooms found Stevie, Martie and Chewie roaming on the roads causing chaos for commuters. The three cob ponies were running across the road and darting between cars in order to graze. It was clear as they were approached that they had been handled roughly by humans in the past, as they were extremely nervous. This made it very difficult for the Grooms to catch and load the ponies in order to bring them back to HorseWorld Trust's welfare department.

On arrival at HorseWorld, all three were checked over by the vet and it was discovered that, not only were they very thin, they were covered in lice and had worms too. Martie and Chewie were only young colts at the time, the vet estimating around 9 months old, and Stevie at just 2 years old. Their care cost over £1,349 in just the first three months after arrival and the costs did not stop there. Now to add to this Stevie has unfortunately become very unwell. The vets cannot determine what is wrong with him; he has had a terrible bout of diarrhoea which has



Taylor Lane Level III Equine Care student from Bath City College with Stevie

caused him to go down to a weight of 220 kilos. He has been given bio-sponge and codeine for his diarrhoea as well as two long doses of intravenous antibiotics, intramuscular depisillan and he is now on a course of steroids. Stevie's issues first presented themselves in December 2014 and to this day his vet and medication bills have cost in excess of £1,000. It is with thanks to your donations that we have been able to offer Stevie the best care and he is now, thankfully, on the mend!

Adoption

A perfect gift...not just for children, but for adults too!



For just **£15 a year** you can adopt a HorseWorld animal.

For more information please visit

www.horseworld.org.uk/adopt

Goodbye Gracie

In January this year, We said a sad farewell to our beautiful Gracie-May. After ongoing veterinary treatment for lameness since September, it was decided no more could be done to ease her discomfort and the heart-breaking decision was made to put her to sleep.

Rescued from horrific neglect in 2001, Gracie was a fun loving gentle giant. She loved people and everyone loved her. She will be greatly missed and will leave a Shire-sized hole in our lives.





Caroline Beek (above left) leads a Discovery group

Missi is a year 10 pupil who has been excluded from school due to disruptive behaviour. She felt she could not concentrate and was the “class clown”. Through a pupil referral unit she was sent on a Discovery course as the classroom was not the place for her to learn or achieve any qualification.

Missi had previously attended Discovery and Sharon had noticed her talent and felt she would be suitable, thus suggesting it to the referral unit. Missi was really glad that this had happened.

She has two horses of her own and felt the course would show her how to look after them properly as well as give her the chance to get a formal qualification. She is currently half way through her City and Guilds Level 1 (kindly sponsored by Smith & Williamson) and, if she achieves, she could progress to Level 2 in year 11.

She is doing well and is good at writing and recording information – she said ‘it doesn’t feel like work’ and she ‘gets on with everyone here’.

Missi also helps a younger group at Discovery by doing some of the basic tasks with them. Missi would like to become a farrier and would recommend Discovery to anyone who was interested.



Missi with Barney and Bingo

Who are Discovery courses tailored for and when do they take place?

Discovery Courses are aimed at young people aged 6 to 19 who may be outside mainstream schooling due to learning disabilities or behavioural difficulties (or at risk of under-achieving). Discovery can have particular benefits for young people within the autistic spectrum and those with ADHD. Sessions are normally held during term-time, but we can also accommodate courses during school holidays. Each course is made up of six weekly sessions of 90 minutes each (we recommend 60 minutes for primary schools).



A typical group size is ideally six to eight, but we can accommodate up to 13 students per course in certain circumstances.

Individual sessions are also available for young people taking the first steps back into mainstream education, those initially unable to function within a larger group, and those whose best interests are supported by 1:1 learning.

There is no age barrier on individual sessions and parents, carers and mentors are welcome to join in.

Find out more about our Discovery courses on our website:

www.horseworld.org.uk/discovery

Or, if you are interested in joining a course please contact Discovery Course Leader Sharon Howell on:

discovery@horseworld.org.uk or Tel. 01275 893023

Join us on Facebook

If you're on Facebook, find 'HorseWorld Trust' and 'like' us to keep in touch with our work, special events and fantastic offers.

You can follow us on Twitter too:
[@HorseWorldTrust](https://twitter.com/HorseWorldTrust)



*Other ways
to support our
vital animal
welfare work:*

- Make a donation at
www.justgiving.com/horseworld
- Or use your mobile phone
Text HRSW11 followed by the amount you wish to donate to 70070 e.g. text HRSW11 £5 to 70070 to donate £5
- Raise money in your community
– ask for our fundraising pack
- Volunteer, rehome a horse or sponsor an animal through our adoption scheme. See our website for details

For more information please email
fundraising@horseworld.org.uk

Giving couldn't be easier

Single payment by card, cheque or postal order



Please complete

Name:

Address:

Postcode:

Tel no:

I wish to become a HorseWorld Champion from £5 per month ☐

Please fill in the Direct Debit section below

I wish to make a regular donation:

£5 ☐ £10 ☐ £20 ☐ £50 ☐ £240 ☐

Or other £ per month ☐ per year ☐

Or a single donation of £

Your email:

☐ I enclose a cheque/postal order (payable to HorseWorld Trust)

Please charge this amount to my ☐ Visa ☐ Mastercard ☐ Maestro

Card No: 3 digit security no:

Signed: Date:

Data Protection – Horseworld is committed to the confidentiality of your personal information. Personal data will be held and used in accordance with the Data Protection Act 1998 and will not be shared with any third parties for commercial use. If you do not wish to receive further appeal mailings from Horseworld please tick the box ☐

Instruction to your Bank or Building Society to pay by Direct Debit



To: The Manager of Bank/Building Society

Address: Postcode:

CAF Reference No.

F S 2 9 3 5

Service User No.

6 9 1 2 1 3

CAF, Kings Hill, West Malling,
Kent, ME19 4TA

FOR CAF OFFICIAL USE ONLY - This is not part of the instruction to your Bank/Building Society. Date of first payment on or after: / /

I would like to make a regular donation of £ Monthly ☐ Yearly ☐ Commencing: / / 20

Name(s) of account holder(s):

Sort Code: Account No:

Instruction to your Bank or Building Society – Please pay Charities Aid Foundation Direct Debits from the account detailed in the Instruction subject to the safeguards assured by the Direct Debit Guarantee. I understand that this Instruction may remain with Charities Aid Foundation and, if so, details will be passed electronically to my Bank/Building Society.

Signed: Date:

Make your gift worth 25% more to us with Gift Aid

Please treat as Gift Aid donations all qualifying gifts of money made

☐ Today ☐ In the past 4 years ☐ In the future Please tick all boxes you wish to apply

giftaid it

I confirm I have paid or will pay an amount of Income Tax and/or Capital Gains Tax for each tax year (6 April to 5 April) that is at least equal to the amount of tax that all the charities or Community Amateur Sports Clubs (CASCs) that I donate to will reclaim on my gifts for that tax year. I understand that other taxes such as VAT and Council Tax do not qualify. I understand the charity will reclaim 25p of tax on every £1 that I gave up to 5 April 2008 and will reclaim 25p of tax on every £1 that I give on or after 6 April 2008.

Signed: Date:

Thank you for your kindness. Please send this completed instruction to:
HorseWorld Trust, Delmar Hall, Keynes Farm, Staunton Lane, Whitchurch, Bristol BS14 0QL

This guarantee should be detached and retained by the payer.

The Direct Debit Guarantee This Guarantee is offered by all banks and building societies that accept instructions to pay Direct Debits

- If there are any changes to the amount, date or frequency of your Direct Debit CAF re: Horseworld Trust will notify you 10 working days in advance of your account being debited or as otherwise agreed. If you request CAF re: Horseworld Trust to collect a payment, confirmation of the amount and date will be given to you at the time of the request
- If an error is made in the payment of your Direct Debit, by CAF re: Horseworld Trust or your bank or building society, you are entitled to a full and immediate refund of the amount paid from your bank or building society
- If you receive a refund you are not entitled to, you must pay it back when CAF re: Horseworld Trust asks you to
- You can cancel a Direct Debit at any time by simply contacting your bank or building society. Written confirmation may be required. Please also notify us. Banks and Building Societies may not accept Direct Debit Instructions for some types of account.

